

SpiritMillennium



Neochrome III

Neochrome III Genuine NAUGAHYDE® BRAND FABRIC

CONTRACT HOSPITALITY HEALTHCARE TRANSPORTATION MARINE



NEO 26 Slate Blue

 <p>NEO 70 Beach</p>	 <p>NEO 71 Seamist</p>	 <p>NEO 72 Spa</p>	 <p>NEO 73 Sunshine</p>	 <p>NEO 57 Caramel</p>
 <p>NEO 74 Fawn</p>	 <p>NEO 75 Harbor Green</p>	 <p>NEO 26 Slate Blue</p>	 <p>NEO 76 Brick Dust</p>	 <p>NEO 46 Antelope</p>
 <p>NEO 77 Nickel</p>	 <p>NEO 40 Emerald</p>	 <p>NEO 78 Indigo</p>	 <p>NEO 79 Cherry</p>	 <p>NEO 29 Ruby</p>
 <p>NEO 80 Laramie</p>	 <p>NEO 42 Pine Forest</p>	 <p>NEO 44 Lapis</p>	 <p>NEO 81 Charade</p>	 <p>NEO 62 Port</p>
 <p>NEO 82 Silhouette</p>	 <p>NEO 5 Aqua Dark</p>	 <p>NEO 61 Midnight Blue</p>	 <p>NEO 3 Purple Gray</p>	 <p>NEO 22 Black</p>

Nauga Soft

Nauga Soft

Genuine NAUGAHYDE[®]
BRAND FABRIC

CONTRACT HOSPITALITY HEALTHCARE TRANSPORTATION MARINE

				
	PR 48 Doeskin	PR 44 Cream	PR 34 Soft White	
				
	PR 43 Velvet Brown	PR 51 Cocoa	PR 35 Fawn	
				
	PR 36 Cabernet	PR 38 Harness	PR 52 Saddle	
				
PR 49 Deep Sea	PR 41 Mulberry	PR 47 Tapestry Red	PR 42 Rose Blush	
				
PR 55 Deep Sapphire	PR 50 Lake Louise	PR 54 Mallard Blue	PR 46 Blue Fog	PR 37 Feather
				
PR 40 Black Satin	PR 49 Deep Sea	PR 39 Laurel	PR 53 Ivy	PR 45 Mint Leaf

Expressions



Expressions Cont.



EX-243

†Peach



EX-250

†Nude



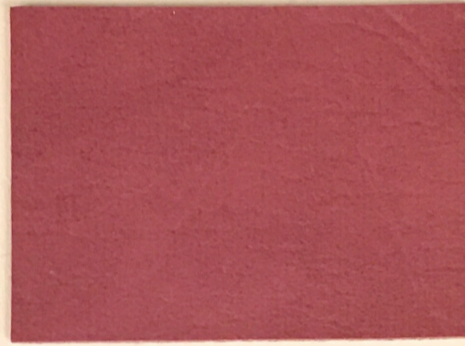
EX-248

†Nu Mauve



EX-244

†Dusty Mauve



EX-246

†Raspberry Yogurt



EX-266

†Persimmon



EX-245

†Fjord Blue



EX-247

†Sizzling Red



EX-258

Pecan



EX-270

†Navy



EX-269

†Garnet



EX-254

Saddle



EX-277

†Black

*Manufactured to be sulfide stain resistant.

Manufactured to meet flammability requirements contained in these specifications*:

California
Fire Regulation
(Bulletin 117-Sec. E)

CCC-A-680 a
Federal Standard 191A
Test Method 5903

Federal Standard 191A
Test Method 5906

Dept. of Transportation
(FAR 25.853b Modified)

Port Authority of
New York and
New Jersey

City of New York
(Bulletin #44)
NFPA 701
Small Scale Test

BIFMA (Screen Test-Sec.
3.3.1) Voluntary Std.
(Same as Calif.
Bulletin 117-Section E)
Automotive (MVSS-302)

Boston Fire Code
(BFD 11-2)

Massachusetts
Fire Code
(FPR-20)

*This term and any corresponding data refer to typical performance in the specific tests indicated and should not be construed to imply the behavior of this or any other fire conditions.

English Pub

English Pub

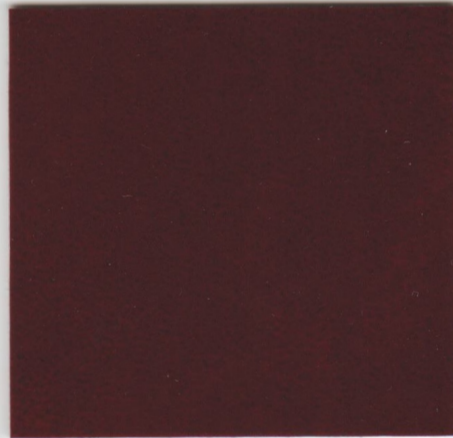
Genuine
NAUGAHYDE®
BRAND FABRIC



EP 86 Ruby



EP 89 Navy



EP 87 Oxblood



EP 83 Gray



EP 85 Antique Blue



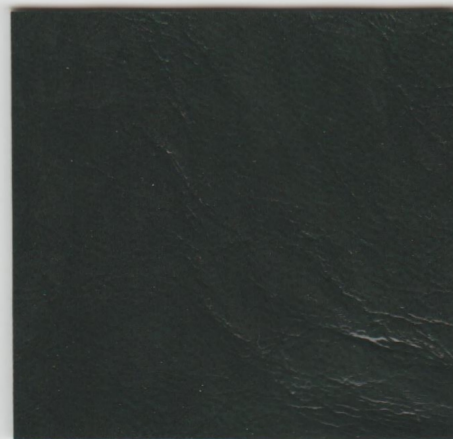
EP 82 Rust



EP 81 Ivory



EP 90 Black



EP 88 Hunter



EP 84 Sable Brown

ColorGuard



ColorGuard Cont.



Rogue II

Rogue II

Genuine
NAUGAHYDE
BRAND FABRIC



CONTRACT

HOSPITALITY

HEALTHCARE

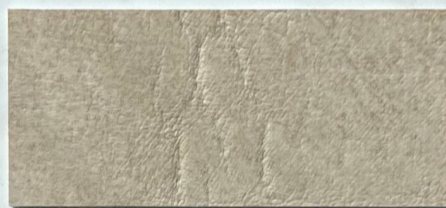
TRANSPORTATION



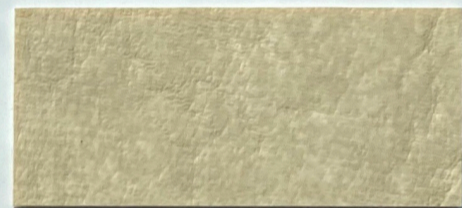
RU 890 Tobacco



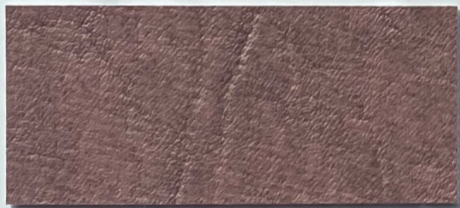
RU 840 Buckskin



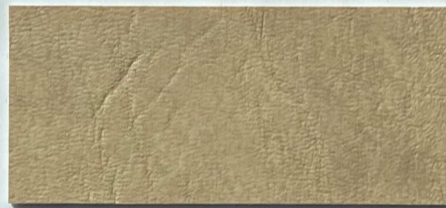
RU 920 Taupe



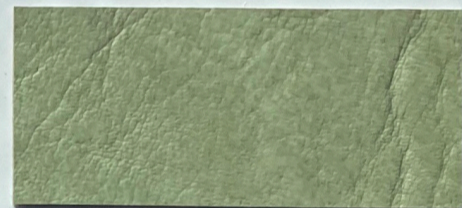
RU 870 Off White



RU 960 Rose



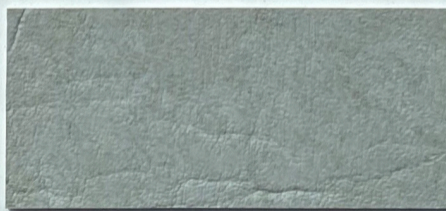
RU 880 Fawn



RU 940 Eucalyptus



RU 750 Indian Red



RU 900 Flint



RU 910 Turquoise



RU 710 Crimson



RU 930 Ninja



RU 950 Blue Mist



RU 820 Walnut



RU 810 Black



RU 780 Blue